

How to replace the main board of the S150

Step1:

Loosen these 4 screws.



Step2:

Peel off one end of the rubber pad and loosen these two screws

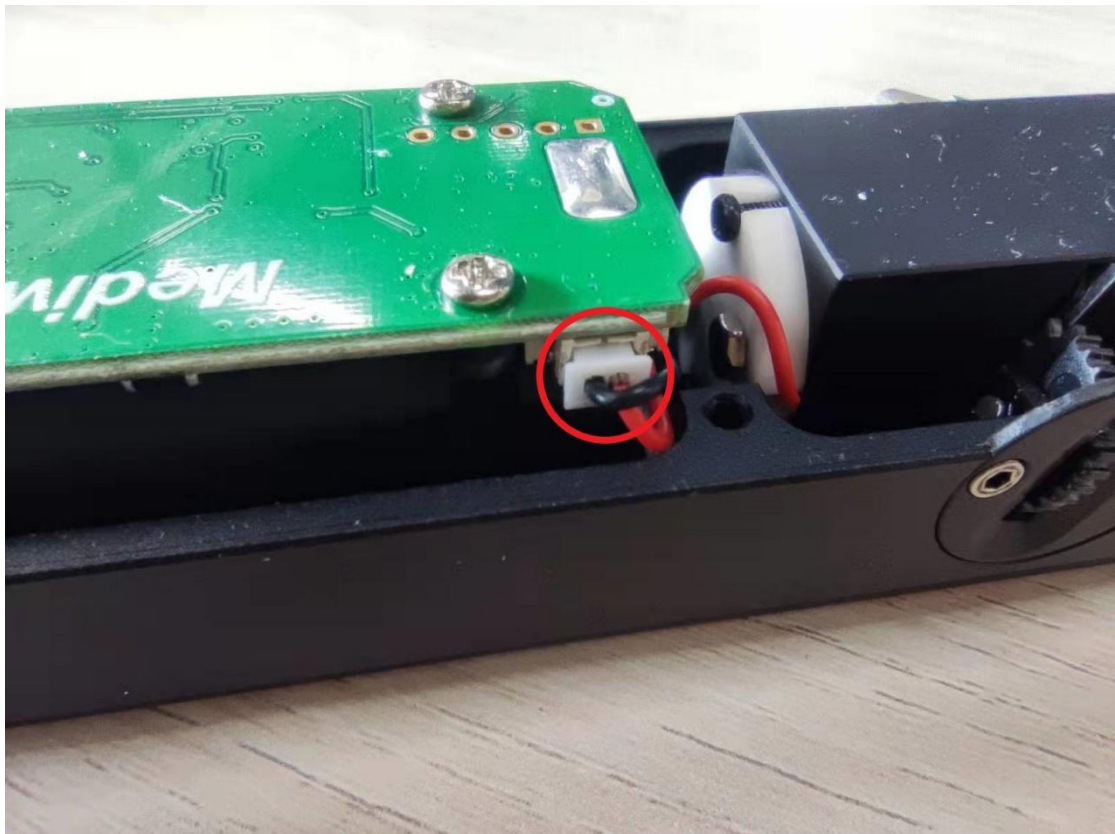


Step3:

Remove the cover.



Step4: Remove this plug.



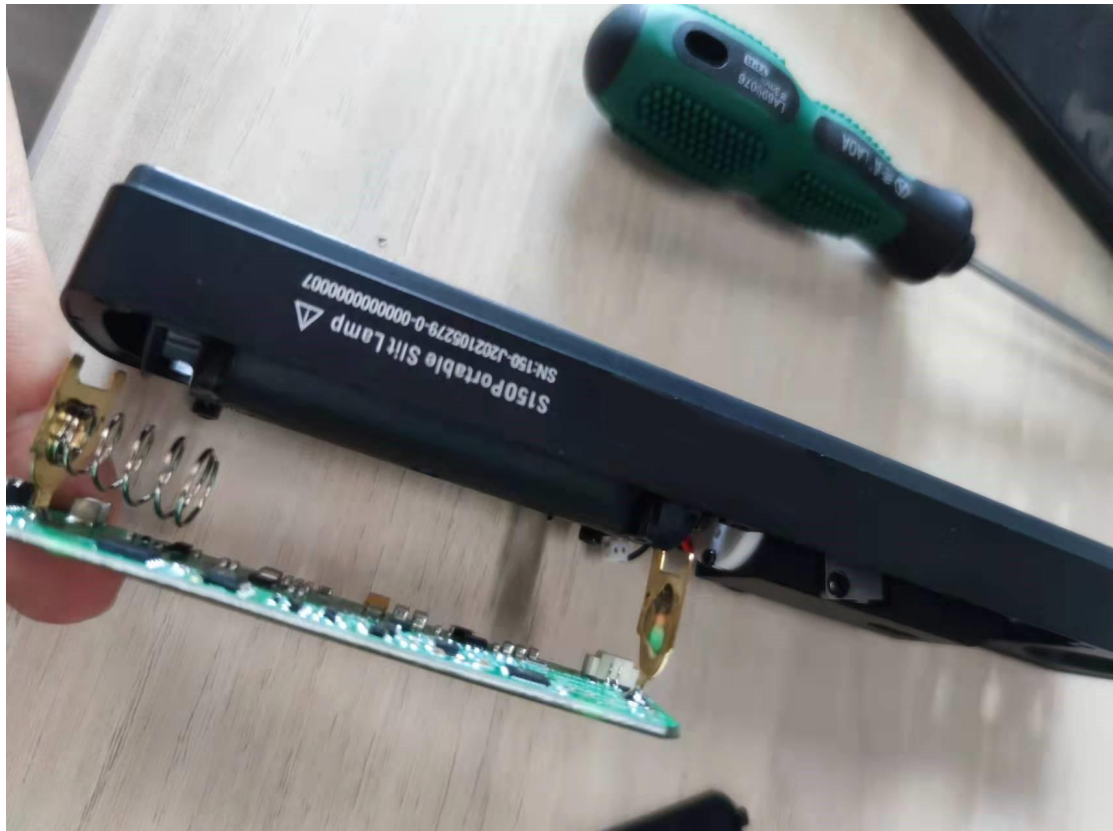
Step5:Loosen these 4 screws.



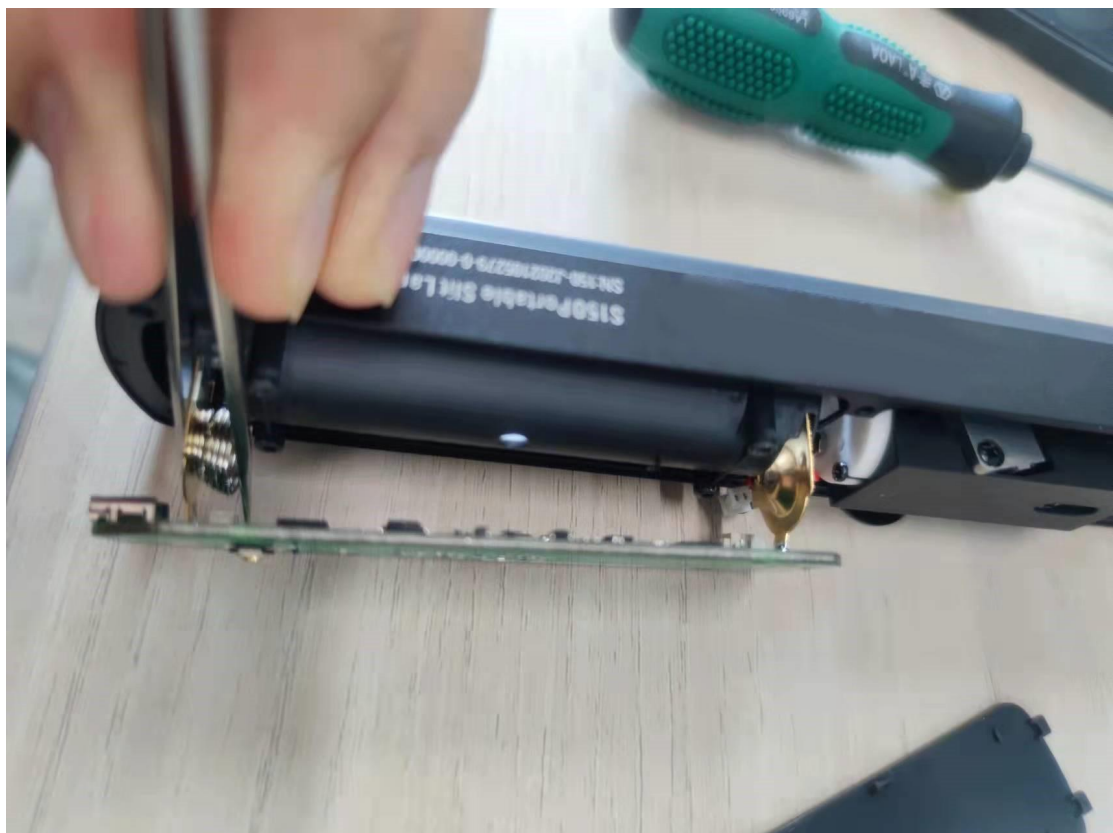
Step 6:

Remove the motherboard from the other side while pinching the spring

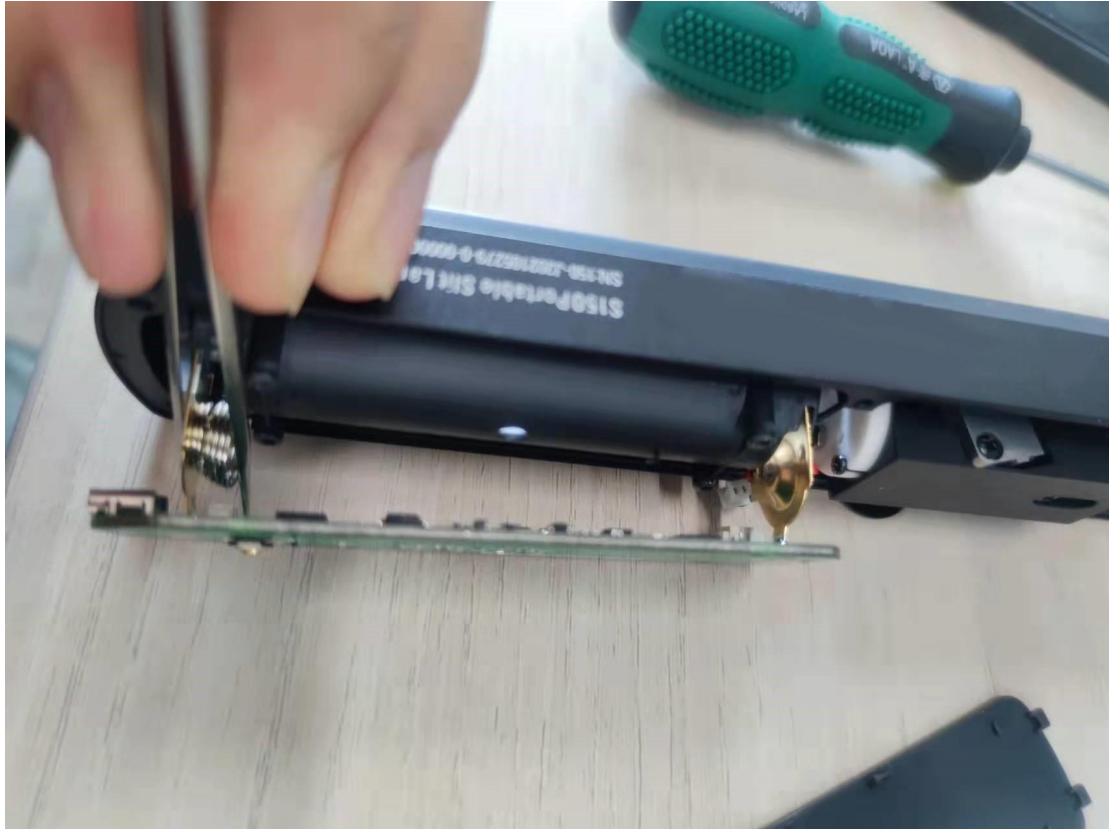




Then install the new main board.



Hold the spring with tweezers and pass it out from the other side.(Note that at the same time also pass through the copper sheet at the other end)



Finally, reassemble the device according to the above method

.Complete.